

Windows Sysinternals

Search TechNet with Bing

United States - English Sign out
Create a Profile

Microsoft | TechNet

Home Learn Downloads Community

[Windows Sysinternals](#) > [Downloads](#) > [Process Utilities](#) > [Process Explorer](#)

Utilities

- [Sysinternals Suite](#)
- [Utilities Index](#)

- [File and Disk Utilities](#)
- [Networking Utilities](#)
- [Process Utilities](#)
- [Security Utilities](#)
- [System Information Utilities](#)
- [Miscellaneous Utilities](#)


Additional Resources

- [Forum](#)
- [Site Blog](#)
- [Sysinternals Learning](#)
- [Mark's Webcasts](#)
- [Mark's Events](#)
- [Mark's Blog](#)
- [Software License](#)
- [Licensing FAQ](#)

Process Explorer v14

By Mark Russinovich

Published: November 16, 2010

 [Download Process Explorer](#)
(1.75 MB)

Rate:

Share this content     

Introduction

Ever wondered which program has a particular file or directory open? Now you can find out. *Process Explorer* shows you information about which handles and DLLs processes have opened or loaded.

The *Process Explorer* display consists of two sub-windows. The top window always shows a list of the currently active processes, including the names of their owning accounts, whereas the information displayed in the bottom window depends on the mode that *Process Explorer* is in: if it is in handle mode you'll see the handles that the process selected in the top window has opened; if *Process Explorer* is in DLL mode you'll see the DLLs and memory-mapped files that the process has loaded. *Process Explorer* also has a powerful search capability that will quickly show you which processes have particular handles opened or DLLs loaded.

The unique capabilities of *Process Explorer* make it useful for tracking down DLL-version problems or handle leaks, and provide insight into the way Windows and applications work.

Download


[Download Process Explorer](#)
(1.75 MB)

[Run Process Explorer](#) now from
Live.Sysinternals.com

Runs on:

- Client: Windows XP and higher (Including IA64).
- Server: Windows Server 2003 and higher (Including IA64).

Installation

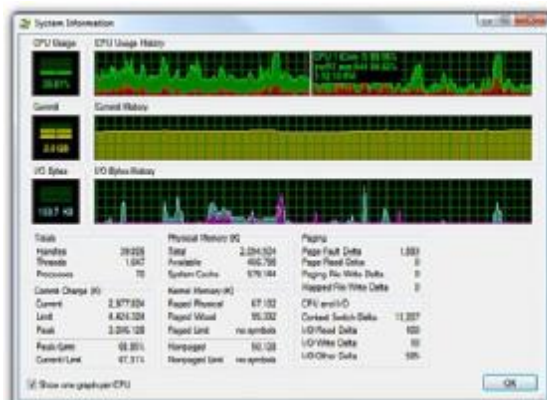
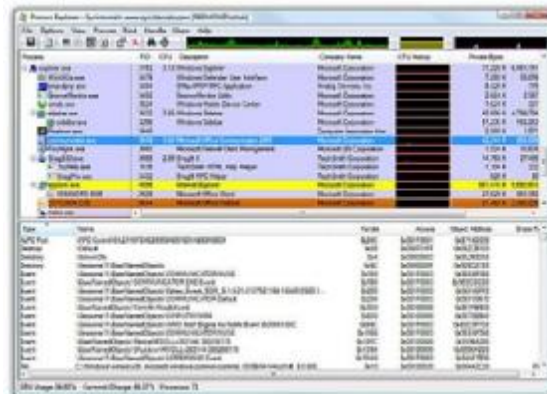
Simply run *Process Explorer* (procexp.exe).

The help file describes *Process Explorer* operation and usage. If you have problems or questions please visit the [Sysinternals Process Explorer Forum](#).

Related Links

Here are some other handle and DLL viewing tools and information available at Sysinternals:

- [The case of the Unexplained...](#)
In this video, Mark describes how he has solved seemingly unsolvable system and application problems on Windows.
- [Handle](#) - a command-line handle viewer
- [ListDLLs](#) - a command-line DLL viewer
- [PsList](#) - local/remote command-line process lister
- [PsKill](#) - local/remote command-line process killer


[Download Process Explorer](#)
(1.75 MB)

[Run Process Explorer](#) now from Live.Sysinternals.com

